

Bog turtles (*Glyptemys muhlenbergii*), the smallest turtles in North America at just 3–3.5 inches long, are a Federally listed endangered species. Their colonies, found in the western part of our state, have declined by at least 50% due to habitat loss from development.

The WLT is committed to protecting species like the bog turtle, and conserving vital wildlife habitat across Wilton.

Photo by Eric Sambol

“ THERE’S SO MUCH IN THIS COUNTRY AND THE WORLD THAT SEEMS TO BE IN FLUX, IF NOT IN FREE FALL. AT TIMES LIKE THESE, IT’S IMPORTANT TO REMEMBER WHAT WE STILL HAVE SOME CONTROL AND INFLUENCE OVER — OUR LOCAL COMMUNITIES.

YES, WE CAN MAKE A SIGNIFICANT DIFFERENCE LOCALLY; ONE VITAL ORGANIZATION THAT’S CONSISTENTLY MADE WILTON A BETTER PLACE FOR US AND FUTURE GENERATIONS IS THE WILTON LAND TRUST. THE WLT MAKES WILTON THE KIND OF PLACE WE HAPPILY CALL HOME, WHERE FUTURE GENERATIONS CAN FEEL THE SAME WAY AND ENJOY THE SPLENDOR OF PUBLIC OPEN SPACE, TOO.

PLEASE STEP UP AND LEND A HAND. GIVE YOUR TIME, HELP WITH FINANCIAL SUPPORT, OR DO BOTH!

-Dr. Mark & Linda Rubinstein, WLT Annual Members

WILTON LAND TRUST

Protecting Wilton’s Natural, Scenic,
and Historical Landscapes

STAY CONNECTED
WWW.WILTONLANDTRUST.ORG
P.O. BOX 77
WILTON , CT 06897
(800) 983-3552
INQUIRY@WILTONLANDTRUST.ORG

WILTON LAND TRUST



LEADERSHIP

THE PRESIDENT STEPHEN H. WHITE



Dear Wilton Land Trust Members,

I often say that this young generation of our community has a healthier understanding of environmental values than mine has. I can feel their enthusiasm when I meet them. It's not just the little kids, but the young parents who bring them up. This is where the green tide is creating a flood of change. They seem to understand the ties between open

space and preserving biodiversity, fighting climate change, and protecting our air and water and lands.

The Land Trust movement began to gain strength around the time when the Wilton Land Trust was formed, 1964. Several factors came together at that time to make the time ripe for action. The publication of Rachel Carson's "Silent Spring" in 1962 and the first Earth Day in 1970 raised awareness about pollution, habitat destruction, and the need for conservation.

By the late 1960s, public opinion had dramatically shifted in favor of environmental protection. Significant environmental legislation came into being in the late 1960s and early 1970s. Today there are over 1700 land trusts in the US that have conserved over 61 million acres of private land across the nation. This is more than the total area of all U.S. national parks combined. The Land Trust Alliance, a national organization supporting land trusts, has set an ambitious goal to conserve an additional 60 million acres by the end of this decade.

That was 60 years ago, but today the reasons have become clearer and the need for action more urgent. The youth of today is reacting to the immediacy of the challenge that is real and is hitting close to home. They are reacting to threats to our way of life. This is an important time for the Wilton Land Trust, and I am proud to be part of this great effort.

Thank you to all our members and contributors to the Land Trust. Together, we are making an important impact in helping to guide this movement. More so than many organizations, we can do something about it. We can protect more land.

Regards,
Stephen H. White
President, Wilton Land Trust

EXECUTIVE DIRECTOR
David E. McCarthy

PRESIDENT
Stephen H. White

VICE PRESIDENT
Craig E. Johnson

VICE PRESIDENT
Roger R. Valkenburgh

SECRETARY
Robert E. Sollmann Jr.

TREASURER
Michael E. Foster

TRUSTEES
Brett D. Amero
Scott M. Bogan
Marlen Clark
Christina Duncan
Lori Fusco
Kaki Hughes
William L. Maxwell
Justin Phillips
Mark Rice

TRUSTEES EMERITUS
Anthony P. Grassi
Thomas M. Sinchak

THE EXECUTIVE DIRECTOR DAVID E. MCCARTHY



Dear WLT Community,

My heart swells with gratitude as I reflect on the incredible journey we've shared this year at the Wilton Land Trust. It has been a year filled with growth, impact, and deepened connections, and I am truly thankful to be part of such a vibrant community.

The Wilton Land Trust holds a special place in my heart—it's my favorite nonprofit, and I feel incredibly lucky to serve as its Executive Director. Our community is unique, and I am constantly inspired by the passion and dedication of our members, volunteers, partners, and Trustees. I've had the privilege of meeting many new friends and strengthening ties with those already dear to me, all while working together to protect and restore habitat across WLT's conserved open space.

Preserving Wilton's open space, rural vistas, and natural beauty is more than just a task—it is a heartfelt mission that drives us daily. As a membership-driven nonprofit, Annual Members are more than just supporters—they are active participants in our mission. Their contributions directly impact our conservation efforts, ensuring that Wilton's natural treasures are protected for future generations to enjoy.

Protecting habitat for our native flora and fauna is essential to maintaining the ecological balance that sustains life in our region. At the Wilton Land Trust, we are committed to conserving land, restoring habitats, and protecting wildlife to ensure that nature continues to thrive. Through our volunteer-driven habitat restoration projects, we rehabilitate degraded areas, allowing native species to reclaim their natural environments.

Thank you to everyone who has supported, volunteered, partnered, and contributed to the Wilton Land Trust. Together, we are making an important impact, guiding this movement toward a more sustainable future. Because of you, we have the power to make a real difference. We can protect more land, and with your continued support, we will.

As we look ahead to the coming year, I invite you to join us in our 2024-25 Annual Membership Drive. By becoming a member, you are not only supporting our mission - you're creating a more bio-diverse and nature-centric Wilton.

With warm regards and sincere appreciation,

David McCarthy
Executive Director

WE ARE WILTON'S LAND TRUST



Photo by Tiffany Shelton

MISSION

The Wilton Land Trust protects Wilton's unique natural, scenic, and historical landscapes through conservation and stewardship. The WLT is a community-focused land trust dedicated to preserving land for open space, protecting biodiversity, and promoting environmental awareness and education.

PEOPLE

TRUSTEES

Our volunteer Board of Trustees ensures our financial health and resources to further WLT's mission. Working closely with the Executive Director, they steer the WLT toward a sustainable and impactful future. In February 2024, we welcomed Marlen Clark as a Trustee, whose contributions have significantly advanced our mission.

STAFF

Our two staff members drive our mission forward. The Executive Director provides strategic leadership, oversees operations, fosters community relationships, and ensures financial stability. The Stewardship Program Manager implements our stewardship efforts and manages our intern programs. Together, they advance our goals and ensure the success of our initiatives.

MEMBERS

Our members actively join our mission by becoming annual supporters, fueling our essential work with their generous contributions. As a member-based nonprofit organization, their commitment is crucial in advancing our mission and making a meaningful impact in Wilton's environment and community.

VOLUNTEERS

Our volunteers are the backbone of our organization, driving our mission and initiatives forward. Almost every aspect of our work is supported by volunteers who serve on committees, engage in stewardship workdays, and take on independent projects.

IMPACT

CONSERVATION

Our preserves protect species from extinction, preserve wildlife habitat, mitigate the impacts of climate change, and safeguard biological diversity. Conservation benefits extend beyond the environment, providing recreation for increased mental and physical health. Open space provides social, physical, environmental, and economic benefits for the Wilton community. To conserve land, we raise funds and work with landowners to establish options like bequeathment, donation, or conservation easements.

TRAIL MANAGEMENT

Wilton treasures the WLT's trails, which are meticulously managed by our stewardship committee, interns, staff, and volunteers. They ensure that our extensive trail network provides visitors with opportunities to safely explore and experience the exceptional beauty and inspiration of nature.

HABITAT RESTORATION

Currently, invasive plants are significantly damaging Wilton's environment. Looking ahead to the end of the twenty-first century, scientists predict that climate change will become the leading driver of global biodiversity loss. By taking action now, and integrating the latest scientific research and best practices into our land management strategies, we're

spearheading restoration projects and community education programs that foster thriving native ecosystems, enhance pollinator habitats, protect watercourses, rejuvenate forests, and increase environmental awareness.

COMMUNITY PROGRAMS

We're passionate about connecting with Wilton and building a nature-centered community. Annually, we organize and co-host over thirty free nature-focused activities, from recreational outings to educational experiences.



ALONGSIDE WILTON'S AWARD-WINNING SCHOOLS, PEOPLE ARE DRAWN TO OUR TOWN FOR ITS NATURAL BEAUTY, OPEN SPACES, NATURE TRAILS, AND VILLAGE FEEL. PRESSURE FROM OVER-DEVELOPMENT CAN THREATEN WILTON'S PRECIOUS LAND ASSETS. THANKFULLY, THE WILTON LAND TRUST HAD WORKED HARD TO PREVENT THE LOSS OF MORE OF WILTON'S UNIQUE NATURAL, SCENIC, HISTORICAL, AND RECREATIONAL VALUES. I ENCOURAGE THOSE WISHING TO PRESERVE WILTON'S WOODLANDS, MEADOWS, WETLANDS, AND WATERCOURSES TO VOLUNTEER AND CONTRIBUTE TO THE LAND TRUST.

-Toni Boucher, WLT Member, Wilton First Selectman

WANT TO GET INVOLVED?
INQUIRY@WILTONLANDTRUST.ORG

STEWARDSHIP

PROTECTING: WILDLIFE

Wildlife relies on habitat, food, water, and cover for survival. The WLT protects diverse habitats across its 840-acre portfolio, including preserves ranging from less than an acre to more than fifty. Our efforts to preserve and protect open space are vital for the conservation and survival of wildlife in Wilton.



ENSURING: OPEN SPACES EXIST

Land can't preserve itself, but we can - and we do. Conservation is the core of our mission. The WLT actively works to acquire more land to protect our natural resources, safeguard drinking water, combat habitat loss, and maintain Wilton's rural character.



STEWARDSHIP: THE ENVIRONMENT

Open space requires constant maintenance, and the WLT works tirelessly to uphold its preserves to the highest standards. Together, WLT's stewardship committee, staff, interns, and the devoted Wilton community work year-round to enhance trail accessibility, manage meadows, improve forests, repair historic stone walls, and steward its nature preserves. Without this continuous effort, these vital conservation areas would quickly lose their beauty and ecological health.



RESTORING: HABITAT & BIODIVERSITY

Restoring habitat and biodiversity is crucial for the health of our environment. The WLT is dedicated to revitalizing habitats lost to invasive vegetation, planting and promoting native species, and creating safe havens for wildlife. Our work is essential in maintaining the rich biodiversity that sustains life, supports ecological resilience, and preserves nature for future generations.



WLT'S STEWARDSHIP PROGRAMS MANAGER: NEW STAFF: CHRISTIAN MALONE

Hired in 2024, Christian manages our extensive trail networks, nurtures our native plantings, and leads the expansion of our internship program - driving youth-led stewardship projects throughout the trust's 840+ acres.

“
WALKING THE WILTON LAND TRUST'S TRAILS IS AN ENJOYABLE PHYSICAL ACTIVITY THAT ALSO UPLIFTS ONE'S SPIRITS AND PROVIDES A LIVING LINK TO OUR PAST. WE NEED TO KEEP CONSERVING OUR BEAUTIFUL OPEN SPACES.
-Paul Evanson, WLT Annual Member

STEWARDSHIP SUNDAYS

RESTORING BIODIVERSITY & MAINTAINING OUR TRAILS WITH THE WILTON COMMUNITY

Stewardship Sundays are free, hands-on educational programs that empower individuals of all ages to make a tangible difference in their communities, fostering a connection to the environment. For five Sundays in the spring and fall, volunteers contribute just 1.5 hours on a Sunday to enhance trails, restore biodiversity, and maintain our cherished natural spaces.

THROUGH THE ENTHUSIASM AND DEDICATION OF OUR STEWARDSHIP COMMITTEE, INTERNS, STAFF, AND THE WONDERFUL WILTON COMMUNITY, STEWARDSHIP SUNDAYS HAVE BEEN A RESOUNDING SUCCESS.

PARTNERING FOR NATURE

ASML

Each year, ASML and the WLT team up for six or more partnership workdays, with ASML providing 30-50 volunteers to restore trails and safeguard local biodiversity. Through ASML's efforts and generous contributions, we are enhancing the quality of life in the Wilton community.

BOY SCOUTS

The WLT proudly collaborated with several young Scouts on impactful Eagle Scout Projects resulting in new footbridges, public seating, and information kiosks to enhance hiking on WLT preserves.

ALLEN'S MEADOW

Under Joe Bear's leadership, in partnership with the Pollinator Pathway, Norwalk River Watershed Association, Wilton Go Green, Woodcock Nature Center, and the Wilton Land Trust, we worked to remove invasives and restore pollinator habitat.

GIRL SCOUTS

The WLT and Wilton Girl Scout Troop 50792 (4th graders) co-organized three workdays to plant 300+ native ecotype wildflowers at Chestnut Meadows, enhancing biodiversity and supporting pollinators.

NRWA & H2H-RCP

The WLT partnered with the Norwalk River Watershed Association and Hudson to Housatonic on a \$20,000 uplands to lowlands RCP grant to remove invasives and restore native watershed habitat at WLT's Marble/Van Haelewyn-Richards Preserve.

WILTON GARDEN CLUB

The Wilton Garden Club designed a pollinator garden and contributed over 700 native ecotype wildflowers, and helped the WLT plant to restore native pollinator habitat at WLT's Chestnut Meadows Preserve.

WLT STEWARDSHIP COMMITTEE

OVERSEEING OUR STEWARDSHIP EFFORTS

Led by Chair Marlen Clark, WLT's Stewardship Committee works to enhance trail safety, restore biodiversity, and nurture vibrant native habitats. Made up of WLT Trustees and volunteers from the community, it works to monitor and inspect all of WLT's properties, advance our stewardship efforts, and organize workdays.

REACH OUT TO GET INVOLVED
INQUIRY@WILTONLANDTRUST.ORG

THANK YOU 2024 VOLUNTEERS!

REPAIRED & CONSTRUCTED:
BRIDGES, TRAILS,
KIOSKS, FENCES,
& STONE WALLS

340+
VOLUNTEERS

225
TREES, SHRUBS &
GRASSES PLANTED

1,000+
NATIVE ECOTYPE 59
WILDFLOWERS PLANTED

20
NATIVE AMERICAN
CHESTNUT TREES PLANTED

ENVIRONMENTAL

CREATING CONNECTIONS WITH NATURE'S WONDERS

STEWARDSHIP SUNDAYS

Restoring native wildlife habitats, maintaining trails, and improving the environment at our community volunteer workdays.

WELLNESS WALK

Combining nature, exercise, and health on our educational guided walks, in partnership with Stay at Home in Wilton.

TREKKING TOGETHER

Exploring Wilton's beautiful landscapes on invigorating and educational hikes, in partnership with the Woodcock Nature Center.

BIRDS & BINOCULARS

Getting up close with local birdlife and the outdoors alongside expert birder and Wilton resident Joe Bear.

BOOKS & A BLANKET

Inspiring kids to engage with nature, books, and recycling through our collaboration with Wilton Library and Wilton Go Green.

BIRDS OF PREY

Discovering the mysterious lives of New England Raptors with engaging presentations in partnership with Christine's Critters.

TURTLE TIME

Learning about the fascinating lives of turtles and tortoises in partnership with TheTurtleRoom.

SUNSET LANTERN WALK

Experiencing the magic of twilight as we explore meadows on our annual lantern-lit hike in partnership with the Wilton Conservation Commission.

POETRY IN THE PRESERVE

Blending nature and art, in our collaboration with the Wilton Library and the CT Poetry Society.

EBIRD WORKSHOP & HIKE

Enhancing birding experiences while contributing to science and conservation, in partnership with H2H-RCP, NRWA, Northeast Bird Habitat Conservation Initiative, Highstead Foundation, and the Cornell Lab of Ornithology.



INTERNSHIPS

CULTIVATING TOMORROW'S ENVIRONMENTAL LEADERS

Wilton Land Trust's revamped and revitalized internship program offers students the chance to deepen their knowledge of conservation science, take part in land management, and develop essential skills. Through this program, students integrate their academics with hands-on fieldwork, connect with the Wilton community, and are equipped to become leaders in the environmental field.

HIGH SCHOOL INTERNS



AFROZ ALI

An intern since 2022, Afroz is a Senior at Wilton High School and part of the Wilton High School cross-country team.

"At the WLT, I've learned about the native and invasive plants that make up our environment, and how to be a responsible environmental steward. Through my internship at the WLT, I have a greater respect for nature."



BRODY FUSCO

A volunteer since 2021, Brody joined the WLT as an intern in 2024. He is a Junior at Wilton High School, a passionate Boy Scout, musician, and an outdoor enthusiast.

"I'm thrilled for the opportunity to transition from volunteer to intern, eager to expand my knowledge, and make meaningful contributions towards land conservation in our community."



ETHAN LIPPER

From 2022-2024, Ethan interned at the WLT, advancing our mission. In May, he graduated from Wilton High School and is now attending the University of Southern California studying Environmental Health.

"I enjoyed my experience interning for the WLT, and would recommend it to any high schooler interested in the environment."



ANNA MORELLO

From 2022-2024, Anna interned at the WLT, advancing our mission. In May, she graduated from Wilton High School and is now attending California Polytechnic State University studying forest and fire sciences.

"I just want to say thank you so much for everything you've done for me, I had a great time interning with the WLT."

COLLEGE INTERNS

CLARISSA GREIS

Clarissa, a sophomore at Fordham University studying Environmental Science, grew up in Wilton. Her passion for the natural world blossomed during Girl Scout camping trips and her apprenticeship at Ambler Farm.

"I'm excited to work with the Wilton Land Trust, eager to engage in its community efforts, and learn more about restoring and protecting Wilton's environment."



CAELAH KENNEDY

Caelah, a junior at the University of Vermont, double majoring in Environmental Studies and Studio Art, with a minor in Agroecology, grew up in Wilton. Her love for the natural world began at a young age when she worked at Ambler Farm as an apprentice. She's interested in agriculture and ecology, climate change, and multiple sectors of the arts like pottery and photography.

"I'm thrilled to have this chance to work with the WLT and share my love of the environment with my community."



ELIZABETH VERMEULEN

Elizabeth, a junior at the University of Virginia studying environmental sciences and economics, grew up in Wilton. She's interested in sustainability and how environmental issues and the economy intersect.

"I'm excited to work with the passionate individuals at the WLT this summer and learn more about conservation and stewardship."



RECOGNIZING ENVIRONMENTAL LEADERSHIP: WILTON HIGH SCHOOL ACADEMIC AWARDS ASSEMBLY

On Monday, May 20, 2024, The Wilton Land Trust honored three exceptional Wilton High School Students at the Academic Awards Assembly.

ETHAN LIPPER: THE WLT E. DAN CAPPEL SENIOR SCHOLARSHIP AWARD - \$750

ANNA MORELLO: THE WLT E. DAN CAPPEL SENIOR SCHOLARSHIP AWARD - \$750

AFROZ ALI: THE WLT 2024 JUNIOR BOOK AWARD



AWARDS PRESENTED BY WLT'S EXECUTIVE DIRECTOR, DAVID MCCARTHY

COMMUNITY

BUILDING A MORE NATURE-CENTRIC WILTON

ANNUAL MEETINGS: LEARN MORE ABOUT YOUR LAND TRUST

2024

At the 59th Annual Meeting of the WLT, held on February 28, 2024, we celebrated significant milestones and reflected on an extraordinary year of advancing our critical mission. The evening's highlight was an inspiring presentation by Amy Barnouw, Director of the Fairfield Region of the CT Audubon Society. She captivated the audience with two live owls and an engaging lecture on Connecticut's incredible wildlife and ongoing conservation efforts.

2025

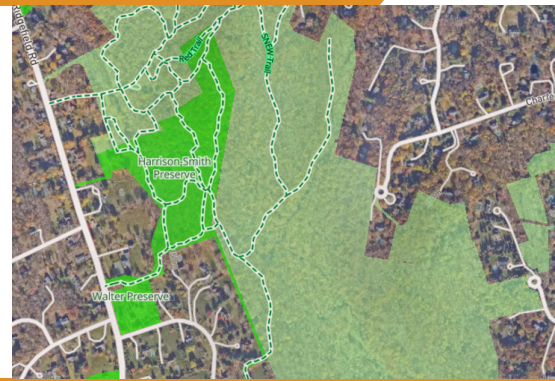
You are warmly invited to the 60th Annual Meeting of the WLT. The event will feature presentations from our President, Treasurer, Executive Director, and keynote speaker. The meeting will take place at the Wilton Library's Brubeck Room on Wednesday, February 26th, with the members' meeting starting at 5:30 pm, followed by the public meeting at 7:00 pm.

The evening's highlight will be our guest speaker, Anthony Pierlioni, author, world traveler, and Vice President of theTurtleRoom, who will discuss the global turtle crisis and conservation efforts. We encourage you to register at wiltonlandtrust.org

YOUR GUIDE TO WILTON'S TRAILS!

WLT's Open Space & Trail Map features every trail and open space Wilton has to offer, all in one convenient location. Available online and compatible with smart devices, the map is continuously updated by the WLT and volunteer Wallace Lee. Start your outdoor journey with us today!

www.wiltonlandtrust.org



“ BEING A PROUD MEMBER OF THE WILTON LAND TRUST HAS SHOWN ME THE PROFOUND IMPACT WE CAN HAVE ON OUR COMMUNITY'S WELL-BEING. WE ENCOURAGE YOU TO SUPPORT THE WLT AND HELP US CREATE A LASTING LEGACY OF NATURAL BEAUTY AND RICH OPEN SPACE FOR FUTURE GENERATIONS.
-John and Mary Brock, WLT Annual Members

CONNECTING KIDS WITH NATURE

Engaging children and young adults with nature is crucial for cultivating a deep appreciation and respect for the environment. Through our diverse educational programs, internships, and partnerships, we inspire lasting connections to the natural world, nurturing a new generation of conservation-minded individuals who will protect and cherish our environment long into the future.

ENHANCING WILTON'S QUALITY OF LIFE

Through cleaner air, improved water quality, and the promotion of active lifestyles, the Wilton Land Trust's preserves play a vital role in enhancing the town's quality of life. WLT's public preserves not only support local ecosystems but also offer residents the opportunity to enjoy fresh air and engage in outdoor exercise, 365 days a year.

“ THE FUTURE OF CONSERVATION BEGINS WITH THE NEXT GENERATION OF LEADERS.
-David McCarthy, WLT's Executive Director

ENGAGING WILTON WITH OUR MISSION

LAND CAN'T PROTECT ITSELF - BUT WE CAN - AND DO!

The WLT and its Members protect, enhance, and restore open space. In a world where climate change, urbanization, and pollution are leading to significant habitat loss and degradation, the importance of WLT's mission is intensifying.

THE PROBLEM

Urbanization affects biodiversity and ecosystem services directly through habitat loss, degradation, and physical changes to the landscape, and indirectly by altering water and nutrient availability, increasing pollution, promoting non-native species, fragmenting habitat, and changing herbivory and predation rates.

THE SOLUTION

WLT's mission-driven efforts to conserve land, protect natural resources, restore native habitats, and promote environmental awareness and education are working to mitigate habitat and biodiversity loss. While solutions to these challenges require policy responses at national and international levels, our Annual Members are making positive changes at the local level.

“ IT IS MY PLEASURE TO LEAD BIRD-WATCHING WALKS FOR THE WILTON LAND TRUST AS WE SHARE THE SAME GOAL OF CONNECTING PEOPLE TO NATURE WITH AN APPRECIATION OF ITS MANY WONDERS. THIS CAN ONLY HAPPEN IF WE HAVE OPEN SPACE IN TOWN TO IMMERSE OURSELVES IN, AND WE ARE FORTUNATE THAT CONSERVING AND PROTECTING SUCH OPEN SPACE IS AT THE CORE OF THE WLT'S MISSION STATEMENT.
-Joe Bear, WLT Member, Program Partner

ENGAGING & ENRICHING WILTON WITH OUR MISSION

INCREASED PRESENCE IN TOWN

The Wilton Land Trust is making a concerted effort to engage with the community. Participating in community events like the Sidewalk Sale, Farmers Market, YMCA's Healthy Kids Day, Winter Carnival, and more has enabled us to connect with residents, share our mission, and highlight the critical importance of land conservation in Wilton.

OUTREACH & ENGAGEMENT: GET INVOLVED IN OUR WORK

It begins with you, and we're looking for your involvement. Our outreach and engagement efforts seek to bring the community together to explore our beautiful trails, participate in unique programs, become active in our mission, and learn about local conservation.

WE'VE LAUNCHED A NEW EVENTS AND COMMUNITY ENGAGEMENT COMMITTEE TO STRENGTHEN COMMUNITY TIES.

CHESTNUT MEADOWS

A 13.5-ACRE WHEELCHAIR-ACCESSIBLE PRESERVE, THIS CHERISHED LANDMARK ONCE INHABITED BY NATIVE AMERICANS, NOW SERVES AS A CULTURAL HUB PRESERVING ONE OF WILTON'S EARLIEST FAMILY FARMS.



Photo by Tiffany Shelton

THE PRESERVE

We've transformed this property into a nature preserve with diverse trails and amenities. Central to our marquee property is the 19th-century Daniel Offutt Barn, a multifunctional meeting space that includes two bathrooms and an office. The preserve also boasts walking trails, a 13-acre native pollinator meadow, an outdoor classroom amphitheater, and an American Chestnut tree orchard, all designed to connect people with nature and support our programs. We'll invite everyone to visit once we finalize a few remaining details.

THE MEADOW

We've been diligently working with our volunteers to enhance and restore native pollinator habitat across the meadow by planting over 1,000 native ecotype plugs, installing a native pollinator garden with the Wilton Garden Club, and seeding more than 2 acres of wildflower meadow. Additionally, we've removed tons of invasive species to ensure a thriving native environment for pollinators and wildlife.

THE ORCHARD

WLT's American Chestnut tree Orchard is a collaboration with the American Chestnut Foundation to save the tree from the brink of extinction. This year, we planted 20 additional trees in our Germplasm Conservation Orchard, bringing our orchard's total to 80!

“ ASML PROUDLY STANDS AS A COMMUNITY PARTNER OF THE WILTON LAND TRUST, STEADFAST IN OUR COMMITMENT TO GREEN COMMUNITIES. TOGETHER, WE ARE SHAPING A SUSTAINABLE AND PROSPEROUS FUTURE FOR WILTON THROUGH ENVIRONMENTAL STEWARDSHIP AND HANDS-ON COMMUNITY ENGAGEMENT.

-ASML, WLT Program Partner & Annual Member

MEMBERSHIP

SUPPORTING OUR CRITICAL MISSION

YOUR SUPPORT = YOUR IMPACT: JOIN OUR EFFORTS TO CREATE POSITIVE CHANGE IN WILTON

SUPPORT OUR CRITICAL MISSION WITH:

GIFTS OF:



ANNUAL MEMBERSHIP



PARTNERSHIP



ESTATE PLANNING



LAND OR EASEMENTS



APPRECIATED ASSETS



PLANNED GIFTS

CREATE YOUR CONSERVATION LEGACY

Protect wildlife in Wilton. By making a planned gift, you can turn your conservation goals into a lasting reality, ensuring that Wilton's open spaces are protected for generations to come. To explore how you can leave a meaningful legacy, please connect with our Executive Director, David McCarthy, at (800) 983-3552.

GIFT OF LAND & EASEMENTS

Conserve more land in Wilton. Much of the open space we manage has been generously donated through outright gifts of land or easement grants from landowners who wish to preserve their property for future generations to enjoy. Donating land or a conservation easement can offer significant income tax deductions and estate tax advantages.

WLT ENDOWMENT FUND

Secure the future of our critical mission by including the WLT Endowment Fund in your estate plans. Your foresight will be crucial in preserving the open spaces and wildlife we all cherish.

MAKE YOUR BRAND A CHAMPION FOR THE ENVIRONMENT

Partner with the WLT and align your business with sustainability. Together, we can protect vital open spaces, bring people closer to nature, and make a lasting impact on the Wilton community.

THANK YOU 2023-2024 WLT ANNUAL MEMBERS

We are deeply thankful to our 2023-24 annual members, volunteers, partners, and supporters. Your dedication has driven our mission forward in remarkable ways. Because of your generosity, we've been able to embark on transformative projects, from enhancing trails and preserving open spaces to restoring ecosystems and enriching the Wilton community. Thank you!

For the fifth consecutive year, 2023-24 has set a new record for unrestricted charitable giving! We are deeply grateful to have such dedicated members supporting our mission. Thank you for your incredible generosity - we look forward to continuing our work together in the 2024-25 Membership year.

MAKE A DONATION TODAY - BECOME A 2024-25 ANNUAL MEMBER!

Our mission is increasingly vital, and with your help, we can continue achieving remarkable progress in Wilton. Join today, get involved, and become a catalyst for positive change in Wilton!

MEMBERSHIP IS EASY

Donate securely on our website or by mail today to activate your support and become a 2024-2025 Annual Member. The WLT is a 501(c)(3) charitable nonprofit, and most gifts are tax-deductible. Membership cycles run from September through August.

MEMBERSHIP COMES WITH REWARDS

Annual Members of the WLT are actively engaged in our mission, elect Trustees, and take great pride in witnessing the tangible outcomes of their support. We keep our members closely connected to the positive impacts of their generous contributions through social media, emails, and newsletters. When you become an Annual Member, you'll receive regular updates and invitations to our programs and exclusive events.

ANNUAL MEMBERS 2023 - 2024

YOUR GENEROSITY POWERS OUR IMPACT - THANK YOU!

LUMINARY - \$10,000 +

ASML
Paul and Carol Evanson Family Foundation
Mark and Linda Rubinstein

LEADER - \$5,000 - \$9,999

John and Mary Brock
Woodson and Christina Duncan
Craig Johnson and Kimberley Young
Wallace Lee
Mark and Amy Rice
Carol Russell
Robert and Kathryn Sollmann
Chris and Catherine Stroup
The Henry Foundation
Roger and Ginny Valkenburgh

BENEFACTOR - \$2,500 - \$4,999

Anonymous
Mark Broach
Anonymous
Minette & Lap Dog David
Kaki and Barney Hughes
Jim and Ellen Kapustka
Craig and Suzanne Knutson
Charles and Jennifer Lawson
Jennifer and Maurizio Morello
Kimberly Olson
Andrea Riina and Rodney S

CONSERVATIONIST - \$1,000 - \$2,499

Jane and Moses Alexander
Emily and Steve Blass
Scott Bogan
Toni Boucher

Bright Funds*

Goldman Sachs*
Wilton Garden Club
The Fleitz Family
Janet and Michael Foster
Anthony and Caroline Gulati
Russell J. Handelman
Jeffrey Headden
Greg and Susan Hendrick
Philippe and Posey Krakowsky
Lee Horticulture Services LTD ^
The Donald Bondy Lowy Family
Farah Masani
James and Kim Mellin
John Miksad
Colleen Moisis
Elizabeth and Gerald O'Connell
Per and Christina Onnerud

AI and Sue Ravitz

RC Landscaping ^
The Ruffel Family
Jessica Skipper
Sutka Family
Amanda Tafuro ^
Target Circle*
Steve and Ann White

STEWARDSHIP - \$500 - \$999

The Amadeo Family
Geoffrey and Lynn Ashworth
The Cawley Family
John and Susan Christian
Daniel and Rebecca Darst
Ken and Pam Fadner
Robert and Barbara Gault
Kevin Jackson Family

Fairfield County Bank

Rick Kenneally and Pat Hoeg
Bruce and Karen Legan
David McCraw
The Nichol Family
Betsy and Steve Pettit
Beverly and Greg Rodiger
Mathias and Bonnie Rumilly
Allison and Robert Sanders
The Smolenack Family
Lynne Tomeny
Turnover Shop of Wilton
Robert Wallace
The Watkins Family
Carolyn Workman
John A Zaro

PATRON - \$250 - \$499

The Albanese Family
Kadee Alonso
John D. Ambler
American Express Company*
Matthew, Danielle, Arden and Macey Andrews
Catherine Munera and Alfredo Basurto
David and Jamie Becker
Joseph and Sue Berland
Jane and Ed Beschere
Mariann and Jon Bigelow
Gladys S. Blundin
Keena Blunski
The Branch Family
Gil and Patricia Bray
Carolyn Brewer
Thomas Clark
Synchrony Financial*
Keith and Laura Coutant
Alper and Asli Daglioglu
Jennifer and Geody Davatzes
Peter and Katie Denious
Nancy and Karl Dolnier
Village Market
Michelle and Doug Fechter
Joseph J. and Ann R. Fiteni
Anthony Fouracre and Mari Okie-Fouracre
The Fusco Family
Dr. and Mrs. Francis Hamilton
Greg Hoffman
Jessica and Paul Joy
David Keating
John and Brittany Kowalski
Maurice Krasnow and Lorie Paulson
Harold and Anne Low
Gloria and Gene Mauro
Will and Tish Maxwell
Tim and Molly McLaughlin
John and Sherry McReynolds
The Meyer Family
The Mody Family
Jason and Casey Monteleone
Jon & Patricia Moynihan
Joseph and Nancy Pantoliano
Sharon Petro
The Rivera Family
Chris and Beth Schellhorn
Timothy and Barbara Schmidt
Lee Ann and Tom Schneider
Tiffany Shelton @ RSKS Photography ^
Tom and Marla Sinchak
David Wecker & Julie Rudnicki
Mr. and Mrs. Michael Weiss

SUSTAINER - \$100 - \$249

William and Susan Abrams
Brett and Coleen Amero
The Aquan Family
The Bankowski Family
Gina Barricelli
Barbara Belknap
Benevity*
Sophie Black
Greg and Caryn Bocchino
John and Colleen Boepple
William B Bonvillian

Bruce and Regina Borden
Kathleen and Bill Brennan
Minter and Connie Brown
Joe Bruno
James Burch
Patrick and Kimberly Burke
Greg and Patricia Caggainello
Claire Camelio
David and Anne Carpiello
Bill and Lisa Caswell
Debbie and Greg Chann
N and C
Cherichetti Horticulture LLC ^
Chevron*
Jessica and Colin Christ
Marlen S Clark
Bob and Robin Como
Michael Conway
Jerome and Judith Cook
Donna and Michael Corrae
Dana Creanga
David and Lucia Cross
Bruce and Susan Cruikshank
Charles E. Cunningham
Ann and Jonathan Dachs
Gordon Dailey
Keith and Jennifer DeAngelis
DeMattia Family
Keith & Christine Denning
David and Marjorie Dephtereos
Jen and Joe DeSanctis
Scott and Susan Douglass
The Driver Family
Diane Fogerty
Christopher Foster
Russell and Irene Friedman
Roger and Patricia Frisch
Richard and Deborah Fuller
Steve and Tina Georgeou
Bette Gollrad
Alan and Pat Gould
Sally and Tony Grassi
Sarah and Noah Grayson
Victoria Green
Laurie Greene
Kathryn Gregory
Jerry and Mary Gail Gristina
Lila Griswold
Anne & Wayne Gura
Nancy Helmig
Lenore and Robert Herbst
Mike and Janice Hess
Anthony and Naomi Higgins
Jade Hobson
Ed and Judy Hoffstatter
Karl and Leslie Hueglin
Bob and Beverly Iannucci
Virginia Irwin
Johnson Family
Anne Goslee Jovovic
Annette and Richard Kaye
Nathan Kellish
Kelly's Pump Service ^
Keshet Family

Bruce and Regina Borden
Kathleen and Bill Brennan
Minter and Connie Brown
Joe Bruno
James Burch
Patrick and Kimberly Burke
Greg and Patricia Caggainello
Claire Camelio
David and Anne Carpiello
Bill and Lisa Caswell
Debbie and Greg Chann
N and C
Cherichetti Horticulture LLC ^
Chevron*
Jessica and Colin Christ
Marlen S Clark
Bob and Robin Como
Michael Conway
Jerome and Judith Cook
Donna and Michael Corrae
Dana Creanga
David and Lucia Cross
Bruce and Susan Cruikshank
Charles E. Cunningham
Ann and Jonathan Dachs
Gordon Dailey
Keith and Jennifer DeAngelis
DeMattia Family
Keith & Christine Denning
David and Marjorie Dephtereos
Jen and Joe DeSanctis
Scott and Susan Douglass
The Driver Family
Diane Fogerty
Christopher Foster
Russell and Irene Friedman
Roger and Patricia Frisch
Richard and Deborah Fuller
Steve and Tina Georgeou
Bette Gollrad
Alan and Pat Gould
Sally and Tony Grassi
Sarah and Noah Grayson
Victoria Green
Laurie Greene
Kathryn Gregory
Jerry and Mary Gail Gristina
Lila Griswold
Anne & Wayne Gura
Nancy Helmig
Lenore and Robert Herbst
Mike and Janice Hess
Anthony and Naomi Higgins
Jade Hobson
Ed and Judy Hoffstatter
Karl and Leslie Hueglin
Bob and Beverly Iannucci
Virginia Irwin
Johnson Family
Anne Goslee Jovovic
Annette and Richard Kaye
Nathan Kellish
Kelly's Pump Service ^
Keshet Family

Dee King
Mr. and Mrs. William Kingston
Jennifer Knapp
David and Linda Koch
Peter Kosche
Charissa and John Kronenberg
George Lamb
Dr. David Langseth
A. Stephen Lanza and Pamela Arciero
Katrina LaPenne
The Leopold Family
Timothy and Joanna Lepore
Robert and Elizabeth Lerch
Roy Levin and Jan Thomson
Roger Levy
Arthur and Ruth Linden
Anonymous
Jennifer Longmire
Frank Mabley
Ed and Jan MacEwen
Malcolm and Jennie MacGregor
Catherine and Joseph Magnano
Mastercard*
Beth McFadden Levenherz
Michael and Elizabeth McGroarty
Donna McKenna
Kenneth Meister and Laurie Shahan
Donna Merrill
Alan Michaels
Hilary Mitchell
Ray and Gail Moscow
Nate Nevas and Leslie Radel
Barli Nugent
Sean and Marguerite O'Connor
Ken and Miwako Ogasawara
Del Overby
Kate Throckmorton and Rick Parisot
Andrew Patterson
Joan Pendergast
The Petroski Family
Justin Phillips
John and Sarah Pinkham
Pitney Bowes*
Denise Reznik
John Richter
David Rintoul and Wendy Kerner
Russ Robbins
Jeffrey and Laura Runge
Rommie Samai
Ann and Chris Lineberger
Beth A. Schneider
The Shames Family
Michael and Marilyn Shay
Elaine and Day Shields
Howard and Terryanne Shimmel
Marsha Shrago
Drew Alexander Silverstein
Kit and Nancy Smith
Sharon and Ken Sobel
Jerry and Beth Sprole
Peter Stisser
Ian Tesar
Dr. Dee Unterbach
The van Heyst Family
Marilyn Van Raalte
Alan and Rosemary Varade

Jimena A Vignola
The Wagner Family
Gary and Sheila Wakoff
Michael Wayland
The Weinstock Family
Sam and Allison Wiley
Roxane Witke
Sandy and Erin Woolard
Hollis Wright-Warren
Kimberly York
Richard and Jiraporn Ziegler
Wayne and Janet Zuckerma

MEMBER - \$50 - \$99
Aronstam Family
Frank Baggio
Joe and Barbara Bear
Philip and Linda Cannella
The DiCenzo Family
Tim and Kathleen Dineen
Jean Evans
Dawn Dahl and Paul Freitas
Good Morning Wilton ^
Alex and Kimi Hardej
Jody Holmes
Aisha Kimmel
Gene Leganza & Theresa Brady
Robert and Carol Lenihan
Robert and Marcia Marafioti
Michael and Elizabeth Marcal
Barbara and Bill Meehan
Mary Otocka
Alison and Chris Perry
Helen Richards
Jennifer Ringelheim
James and Vida Rothschild
Mr. and Mrs. Schott
John and Rachel Scott
Mr. and Mrs. Warren L Serenbetz Jr.
Doug and Sylvia Smith
Jennifer and Alan Spirer
Susan Throckmorton and Sheryl Puletz
UBS*
Wendy Wickrey
Brian and Abby Walker
Pat and Fred Wernig
Michael and Meryll Wolfman
Lisa and David Zappaterrini

SUPPORTER - UP TO \$49
Grace Bandoq
Jessica and Matthew Brand
Campbell Soup Company*
Peggy Celuch
Stacey Clark
Celeste Cobb
Drum Hill Chapter Daughters of the American Revolution
Douglas Davison
Jessica Dellacorte
Ashley DeMeola
Connie Dickerson
Linda Fairchild
Gary Foster
Nadia Garcia
Simone Gignoux
Valerie Hennessy

Sherry and Charles Johnson
Brian Kannry and Danielle Denega
Barbara Kaplan
Jack Keane
Bethany Kluberanz
Vijay Kumar
Alexandra Langan
Madeline Li
Dave Lowrie
Mariam Magda
Eleanor Mark-Zhang
Sophie and Vincent L Marshall
Gail and Melvin Minthorn
Caroline Neff
Meghan O'Neil
Frank and Maurie O'Neill
Katie O'Toole
Donald Offinger
Jack Parascondola
Jim and Christine Perakis
Justin Ramsteck
Molly Robertson
Kathleen Rooney
Kaity Ruger
Jessica Savinelli
Sean and Rebecca Serrell
Tim Shea
Clifford Snavely
The Stilianos-Mizerik Family
Stop and Shop*
Brenna Thompson
Helen Whitten
Mary Zwecker



THE WILTON LAND TRUST'S EFFORTS TO BRING TOGETHER INTERGENERATIONAL VOLUNTEERS ARE SIGNIFICANT TO ME. THEIR ABILITY TO UNITE PEOPLE OF ALL AGES CREATES A STRONG SENSE OF COMMUNITY AND ENSURES THAT CONSERVATION KNOWLEDGE AND PASSION ARE PASSED DOWN THROUGH GENERATIONS. THIS COLLABORATIVE APPROACH STRENGTHENS COMMUNITY BONDS AND EMPOWERS INDIVIDUALS OF ALL AGES TO CONTRIBUTE TO PRESERVING OUR NATURAL ENVIRONMENT.

-Farah Masani,
WLT Member